

Michael Groh Mansion

3043 Superior Avenue, Cleveland 44114

Located on Superior Avenue inner belt, a major thoroughfare to Downtown Cleveland. Easy access to I-90 and I-71.

Office/Program Space!
Near Downtown!



**AVAILABLE
IMMEDIATELY**

**Second Floor 2,200sf
Garden Level 1,400sf**



2nd Floor Photos



Redevelopment: 1997

Parking: 20 cars, Free Street Parking

Available Square Footage:

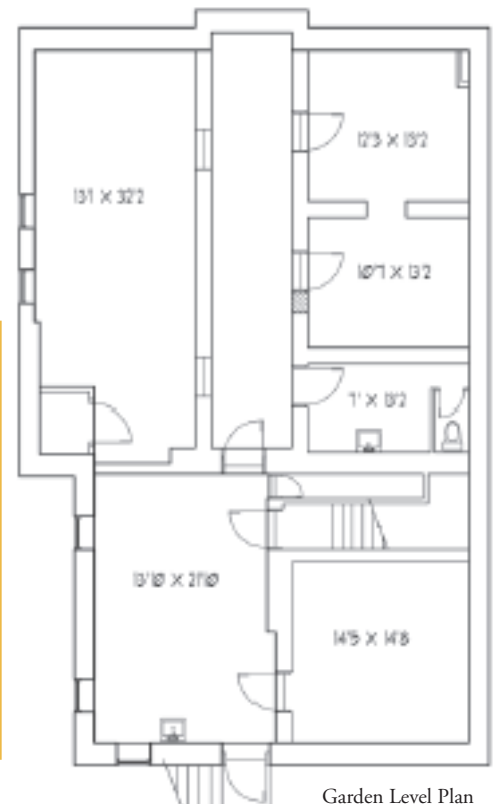
Second Floor 2,200 sf/Garden Level 1,400 sf
(Adjacent building 2,200 sf is also available)

Listing: Cleveland Landmark Register

Built in 1872 in the turn-of-the-century Italianate style as a family home for Michael Groh. Listed on the Cleveland Landmark Register.

This highly stylized mansion features large rooms, 12-foot ceilings, historic woodwork, and ample storage.

**Call 216.431.9100 x201
for more Information.**



Garden Level
Photos



THE CHESLER GROUP, INC.
Unique Places. Affordable Spaces.

www.cheslergroup.com • mechesler@cheslergroup.com